

mazore

Trading Ltd

distance under control



Locate-31

TRACKING, REMOTE CONTROL, REMOTE MONITORING: DISTANCE UNDER CONTROL – ANYTIME, ANYWHERE

Our locate-31 was developed with the objective of transferring business-relevant data between central offices and mobile objects such as cars, trucks, ships etc..

The device is equipped to transfer data via GPRS or SMS using the cellular radio network and also has a highly sensitive GPS receiver which allows the exact GPS position of the device to be determined almost anywhere in the world with accuracy of a few meters.

The many functions of this device provide the user with comprehensive possibilities for tracking mobile objects and therefore also with high cost-saving potential. A significant contribution to this is made by the extensive possibility for integrating the device into a company's existing processes. This device also provides many possibilities for optimizing a company's existing processes or even eliminating these with the assistance of technology.

The locate-31 is the result of a successful combination of high-performance software and hardware components such as e.g., GPS, GPRS, camera interface, driver identification etc..



Mazore Trading Ltd. - Krinon 16 - 3110 Ekali – Limassol/Cyprus

Sales and information: e-mail: info@mazore.com - website: www.mazore.com

Almere/The Netherlands tel: +31-36-5387090 - fax: +31-36-5387099

Oberhausen/Germany tel: +49-208-6986088 - fax: +49-208-6986087

STANDARD FEATURES

- GPRS and SMS
- GPRS – the low-cost dedicated internet connection is fully supported.
- Data, firmware and configuration parameters can be determined individually by the user for each device, either via the built-in serial interface and a configuration program or via the internet (air interface).
- This device supports a large number of applications:
 - **fleet-controlweb**
The internet-based fleet management software for professionals
 - **MP-route**
The interface between our M2M-commserver and the Microsoft map application MapPoint
 - **FT-route**
The interface between our M2M-commserver and the map application Fugawi Tracker
 - **DGPS enabler**
The server component for all users needing higher accuracy of GPS coordinates
 - **M2M-commserver**
The internet-based gateway for all communication tasks between tracking modules and backend application

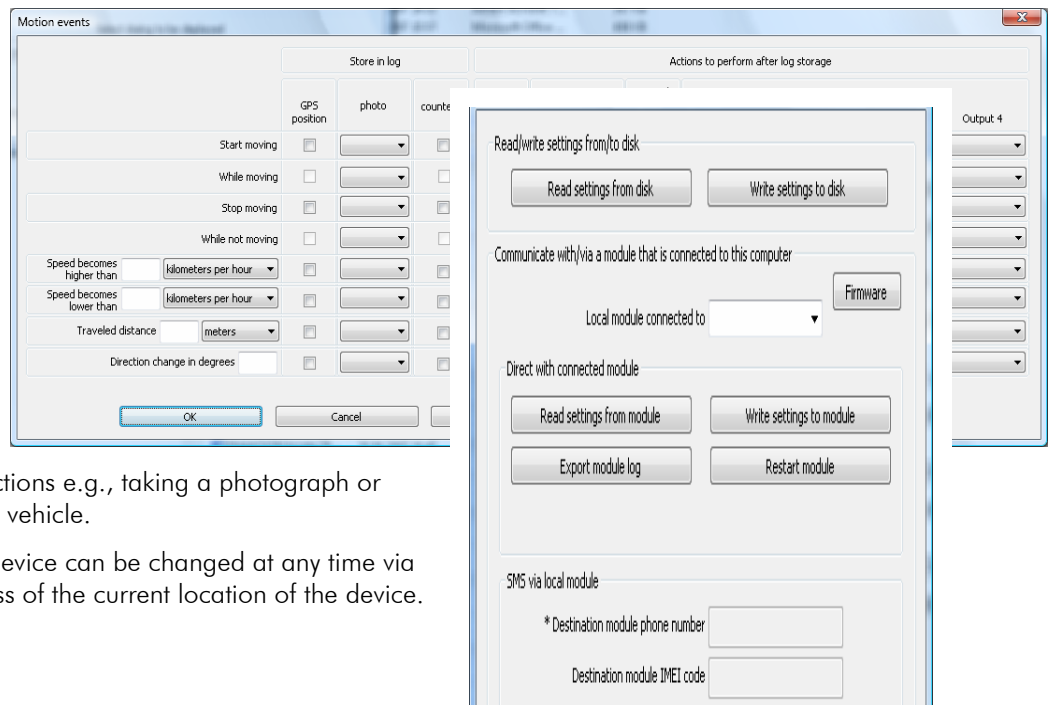
High-performance configuration tool

The locate-31 remote monitoring module can be adjusted extremely quickly and easily to fit the specific requirements of any company. All that is needed for this is a regular PC, a serial cable and the locate-31 configuration tool.

This usually eliminates the need for a time-consuming programming of devices. With just a few clicks in the configuration tool the device will depend on the respective event act exactly as you expect it to.

The device also supports voice calls, which can be used to trigger various different actions e.g., taking a photograph or immobilization of a stolen vehicle.

The configuration of the device can be changed at any time via the air interface, regardless of the current location of the device.



Locate-31

Functional scope

- Telit quad band GSM module
 - GPRS support (class 10)
 - SMS support
- 12-channel parallel GPS receiver
- Standard SIM card reader, 3 volt
- 4 galvanically isolated digital inputs
- 4 galvanically isolated digital outputs (500 mA)
- 3x RS232 interface (transmit)
- 5x RS232 interface (receive)
- Camera connection
- 1Wire connection for driver id, temperature sensor etc.
- 3 LEDs for GSM/GPS/POWER
- Robust, black, aluminum housing (80 x 67 x 20 mm)
- Weight: 145g
- Power supply (6 – 31 volts DC), with software monitoring
- High-performance power-saving modes with a large number of configuration options
- Software update possible via serial interface of device or air interface (GPRS)
- E4-checked in compliance with 95/54/EC



VGA camera
640x480, color

Connections

- Power connection: Molex 43045-2412
- Inputs/outputs: Molex 43045-0412
- GSM antenna (cellular radio): SMA plug
- GPS antenna (satellite tracking): SMA plug

Accessories (optional)

- VGA camera, color
- Reader and key fob for driver id
- Solar panel
(charging electronics are built into the locate-31 remote monitoring module)



Solar panels

Products

Product	Art.-No.	Product description	Price
Locate-31	LOC-07-31	Basic device GPS/GPRS <ul style="list-style-type: none"> • configurable • 1Wire connection • Camera connection • Solar panel support • GSM/GPS antenna • Connection cable 	398.-- Euro
Antenna-16	ANT-02-16	Combined GSM/GPS roof antenna with 3m connection cable	79.90 Euro
Accessory-21	ZUB-02-21	2m serial cable PC ↔ locate-31 for device configuration and updating	18.90 Euro
Accessory-23	ZUB-02-23	Alarm button for built-on installation	39.90 Euro
Accessory-24	ZUB-02-24	Illuminated alarm button 8.1mm with lamp	16.90 Euro
Accessory-26	ZUB-02-26	12 Volt power adapter for operation of locate-31 with 220 volt AC	39.90 Euro
Accessory-30	ZUB-02-30	Wireless remote control for activation/deactivation of various device functions	105.-- Euro
Accessory-31	ZUB-07-31	Modified connection cable	Please inquire
Accessory-32	ZUB-02-32	12 volt battery 700mAh with charging electronics	79.90 Euro
Camera-31	ZUB-07-32	Camera with connection cable for locate-31 Sensor: Omnivision Resolution: max. 640x480 Format: JPEG Color depth: 16 Bit Lens: f4.0mm / F 2.2	79.90 Euro
Solar-31	ZUB-07-33	Solar panel with locate-31 support (special version of locate-31 required; same price) Material: Thin film solar cells Rated voltage: 16.8V Energy transfer: 2.1W Dimensions: 144 x 293 mm Weight: 600g	99.90 Euro
Accessory-33	ZUB-07-33	Solar battery with locate-31 support Rated voltage: 12V Capacity: 2000 mAh Dimensions: 150x20x90 mm Weight: 680g	79.90 Euro