

mazore

distance under control

Trading Ltd

Driver-id

Version 2.7

Inexpensive Driver Identification System

The driver-id is an inexpensive driver identification system which can be attached to the remote control unit locate-29. The **driver-id** is fully supported by the locate-29 firmware as well as by the M2M-commserver and the web based driver logbook fleet-controlweb.

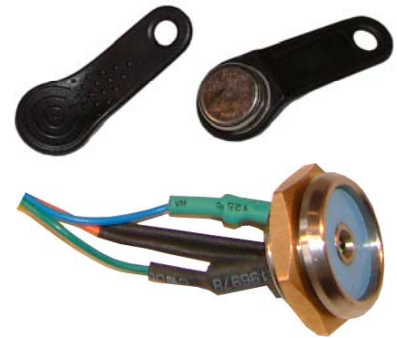
It can be installed into an instrument panel without any problems by its simple structure.

The LED in the center of the reader indicates whether the reading was successful or not.

The ever lasting id button can be put into a plastic mounting plate (fob) to carry the id button for ex. at a standard key chain.

Each id button reports a world wide unique number.

Even with an installed **driver-id** reader you still have access to both serial interfaces of the locate-29 unit without any restrictions.



Locate-29

Products

Product	Part-No.	Description	Price
ID-Button	ZUB-05-01	ID button with key fob, black	10,90 Euro
Driver-id reader	ZUB-05-02	Driver id reader including 3m cable compatible with locate-29	56,90 Euro

Mazore Trading Ltd. - Krinon 16 - 3110 Ekali – Limassol/Cyprus

Sales and information: e-mail: info@mazore.com - website: www.mazore.com

Almere/The Netherlands tel: +31-36-5387090 - fax: +31-36-5387099

Oberhausen/Germany tel: +49-208-6986088 - fax: +49-208-6986087