

mazore

Trading Ltd

distance under control

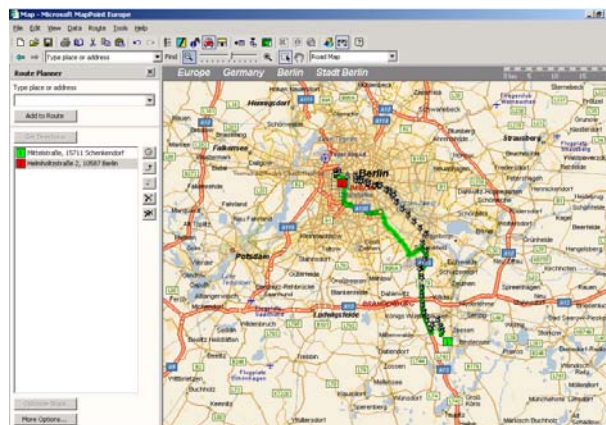
V-locator_{pro}

Fleet Management, Vehicle Accounting, Surveillance and Vehicle Theft Protection For Owners of Medium Sized Fleets

The target group for our v-locatorpro are companies, which are interested in the surveillance of their fleet, in computer based accounting of their fleet and in theft protection at the same time. The v-locatorpro is the cost effective combination of the following products:

- **v-locatorcomfort**
the car theft protection for mobile objects
- **v-locatorbusiness**
the vehicle tracking and fleet management system for medium sized fleets

v-locatorpro can optionally be combined with can-66 and driver-id.



Planned and Driven Route of a Vehicle

Mazore Trading Ltd. - Krinon 16 - 3110 Ekali – Limassol/Cyprus

Sales and information: e-mail: info@mazore.com - website: www.mazore.com

Almere/The Netherlands tel: +31-36-5387090 - fax: +31-36-5387099

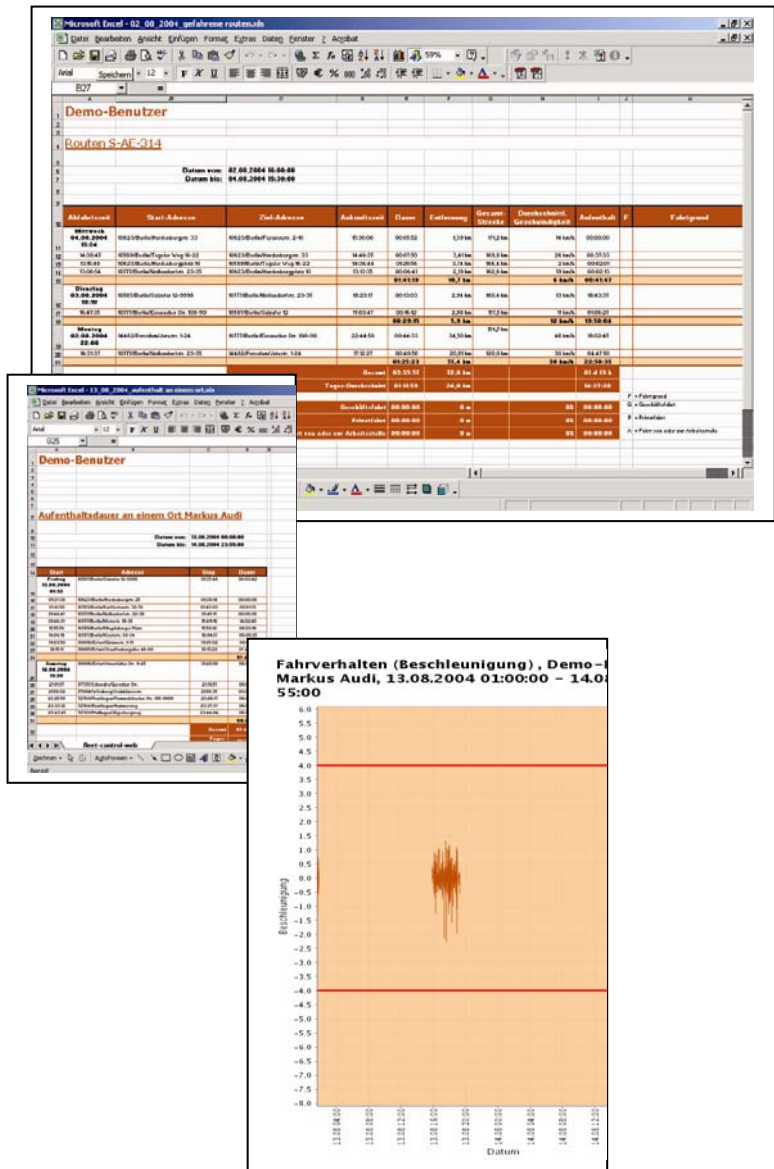
Oberhausen/Germany tel: +49-208-6986088 - fax: +49-208-6986087

The Reports

An important part of v-locatorpro is the web based vehicle tracking and fleet management application fleet-controlweb. Fleet-controlweb receives various data from our VTUs like the locate-28 (trucks) or fleet-control-29 (cars) and reports this data in numerous different reports (text based and graphical reports)

The following reports are available:

- Current position of all vehicles
- List of routes a vehicles has recently been driving
- Details of each route when was which vehicle where, how fast was which vehicle when and where, how long was each part of the route
- Details regarding the pause times of each driver
- Details regarding the stay times of each driver
- Details regarding traffic jam during certain routes
- Driver logbook (e.g. for the tax authorities)
- Report about the driving behavior of each driver (graphics)
 - Value of positive and negative acceleration
 - Speed details for each trip
- Report of exceptions
 - When and where was the ignition on longer as expected despite the fact, that the vehicle was not moving
 - When and where was the vehicle driving faster than allowed
 - When and where was the voltage of the car battery lower than a pre configured limit?
- And many more



Content of the Package

o **Hardware**

- GSM/GPS/GPRS remote control unit locate-28/29
- Combined GSM/GPS antenna – easy to install in any vehicle
- Breakout box for easy connection of the remote control unit to the battery and the sensors of the vehicle
- Alarm button with integrated LED
- Separate LED to signal the status of the vehicle theft protection
- 2 remote control handsets to switch the vehicle theft protection on and off and to issue an emergency alarm (distance up to 100m)

o **Software**

- Full access to fleet-controlweb, the web based fleet management application for medium sized fleets.
- Driver logbook including the possibility to use so called “named positions” (e.g. “Office” instead of “Johnson Road 3b”). This makes reading the reports easier and quicker.
- Access to tele-pos, the phone based position report with automatic update of the announcement as long as the vehicle is moving.
- Position report of a vehicle in the form of an address via Internet
- Position report in the form of a symbol shown on a map (with zoom in functionality down to street level in many areas of Europe)
- Report of the voltage of the power supply of the vehicle
- Full support of GPRS, the cost effective permanent connection of a vehicle into the Internet (typically less than 10 Euros per month per vehicle including basic fees and usage)
- Integration with a security call centre is possible



Mobil-Box to be connected to the cigarette lighter

o **Vehicle Theft Protection**

The VTU has 4 digital inputs, 4 analog inputs and 4 digital outputs. These inputs and outputs can be used for many different remote control and surveillance tasks.

Digital inputs can amongst others be used for the following applications:

- Is somebody in the rear area of the truck (movement sensor)
- Report about open/closed doors
- Is somebody sitting in the car (seat contact)

Digital outputs can amongst others be used for the following applications:

- Interruption of the ignition
- Activation of the going-away-barrier
- Activation of a separate car heating

Analog inputs can amongst others be used for the following applications:

- Is the air pressure ok of the tires?
- Has the fuel been refilled after the last trip?
- Has the construction machine been operated within the allowed limits regarding motor temperature, oil pressure etc.?



Theft Control Handset

All alarms that have been recognized can be forwarded directly to security call centre. Well trained professionals in the emergency call centre will then act properly to handle the issue according to pre defined rules.



The Remote Surveillance Unit (VTU)

The v-locator onboard unit combines a receiver for GPS tracking information ,a GSM/GPRS module for mobile machine-to-machine communication as well as multiple inputs and outputs including analog inputs for the surveillance of many different functions of a vehicle.

The unit can be used to transmit positions of a vehicle as well as alarms and states to your mobile phone or to a fleet management software as well as to a professional security call centre. Optionally a PDA or display (e.g. display-56) can be connected to the VTU to use the data of the VTU for navigation purposes and the unit can be combined with can-66 and driver-id. At the same time, the display or PDA can be used to transmit data from the back office to the driver and vice versa including signatures of the driver or signatures of customers.

Product	Product Description	Price			
v-locatorpro Hardware VLP-03-04	GSM/GPRS/GPS – Onboard Unit, combined GSM/GPS-window antenna with 3m cable, 2 remote control handsets to activate / de-activate the car-theft protection, various cables, signal diode for status indication	1-24 : 1.499 Euro	25+ : 1.349 Euro	100+ : 1.199 Euro	500+ : 999 Euro
Product	Product Description	Monthly userfee per object			
		1-24 objects	25+ objects	100+ objects	500+ objects
v-locatorpro Software EFC-04-48	Web based ready-to-go solution for fleet management, vehicle surveillance and vehicle theft protection including the following components: <ul style="list-style-type: none"> ▪ Use of tele-pos for telephone based position report ▪ Full use of fleet-controlweb ▪ Report generator for own report templates ▪ Detailed installation- and user manual in English language with many illustrations 	54 Euro	49 Euro	44 Euro	39 Euro

The minimum duration of the contract is 48 months. A specially configured SIM-card, which will be delivered by your reseller, is needed for the system to function properly.