

mazore

Trading Ltd

distance under control



locate-06

TRACKING, TIME RECORDING, REMOTE MONITORING: DISTANCE UNDER CONTROL – ANYTIME, ANYWHERE

Locate-06 was developed with the objective of transferring business-relevant data between a central office and mobile objects such as cars, trucks, ships etc.

The device is equipped to transfer data via GPRS or SMS using the cellular radio network and also has a highly sensitive GPS receiver which allows the exact GPS position of the device to be determined almost anywhere in the world with accuracy of a few meters.

The low-cost device and its easy operation provide the user with comprehensive possibilities for tracking mobile objects and therefore also with considerable cost-saving potential.

Locate-06 is the result of a successful combination of high-performance software and hardware components, e.g., GPS, GPRS, driver id etc.



Mazore Trading Ltd. - Krinon 16 - 3110 Ekali – Limassol/Cyprus

Sales and information: e-mail: info@mazore.com - website: www.mazore.com

Almere/The Netherlands tel: +31-36-5387090 - fax: +31-36-5387099

Oberhausen/Germany tel: +49-208-6986088 - fax: +49-208-6986087

STANDARD FEATURES

- GPRS and SMS
- GPRS – the low-cost dedicated internet connection is fully supported.
- Data, firmware and configuration parameters can be determined individually by the user for each device, either via the built-in serial interface and a configuration program or via the internet (air interface).
- This device supports a large number of applications:
 - **fleet-controlweb** - The internet-based fleet management software for professionals
 - **MP-route** - The interface between our M2M-commserver and the Microsoft map application MapPoint
 - **FT-route** - The interface between our M2M-commserver and the map application Fugawi Tracker
 - **DGPS enabler** - The server component for all users needing higher accuracy of GPS coordinates
 - **M2M-commserver**
The internet-based gateway for all communication tasks between tracking modules and backend applications
 -

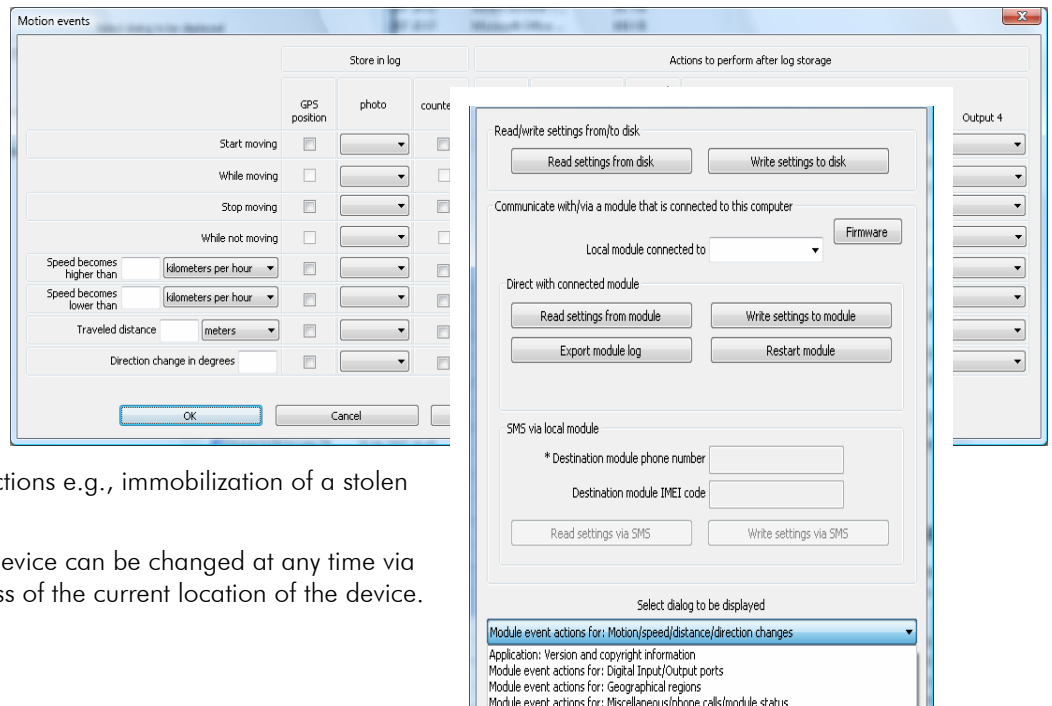
High-performance configuration tool

The locate-06 remote monitoring module can be adjusted extremely quickly and easily to fit the specific requirements of any company. All that is needed for this is a regular PC, a serial cable and the locate-06 configuration tool.

This usually eliminates the need for a time-consuming programming of devices. With just a few clicks in the configuration tool the device will depending on the respective event act exactly as you expect it to.

The device also supports voice calls, which can be used to trigger various different actions e.g., immobilization of a stolen vehicle.

The configuration of the device can be changed at any time via the air interface, regardless of the current location of the device.



Functional scope

- Telit quad band GSM module
 - GPRS support (class 10)
 - SMS support
- 12-channel parallel GPS receiver
- Standard SIM card reader, 3 volt
- 4 galvanically isolated digital inputs
- 4 galvanically isolated digital outputs (500 mA)
- 3x RS232 interface (transmit)
- 5x RS232 interface (receive)
- 1Wire connection for driver id.
- 3 LEDs for GSM/GPS/POWER
- Robust, black, aluminum housing , (80 x 67 x 20 mm)
- Weight: 145g
- Power supply (6 – 31 volts DC), with software monitoring
- High-performance power-saving modes with many configuration options
- Software update possible via serial interface of device or via air interface (GPRS)
- E4 checked in compliance with 95/54/EC



Connections:

- Power connection: Molex 43045-2412
- Inputs/outputs: Molex 43045-0412
- GSM antenna (cellular radio): SMA plug
- GPS antenna (satellite tracking): SMA plug

Products and Prices

Product	Art.-No.	Product description	Price
locate-06	LOC-07-06	Basic device GPS/GPRS <ul style="list-style-type: none"> • configurable • 1Wire connection • GSM/GPS antenna • connection cable 	249.-- Euro
antenna-16	ANT-02-16	Combined GSM/GPS roof antenna with 3m connection cable	79.90 Euro
accessory-21	ZUB-02-21	Serial cable 2m PC ↔ locate-06 for device configuration and updating	38.90 Euro
accessory-23	ZUB-02-23	Alarm button for built-on installation	39.90 Euro
accessory-24	ZUB-02-24	Illuminated alarm button 8.1mm with lamp	29.90 Euro
accessory-26	ZUB-02-26	12 Volt power adapter for operation of locate-06 with 220 volt AC	39.90 Euro
accessory-06	ZUB-07-06	Modified connection cable	Please inquire
accessory-32	ZUB-02-32	12 volt battery 700mAh with charging electronics	79.00 Euro